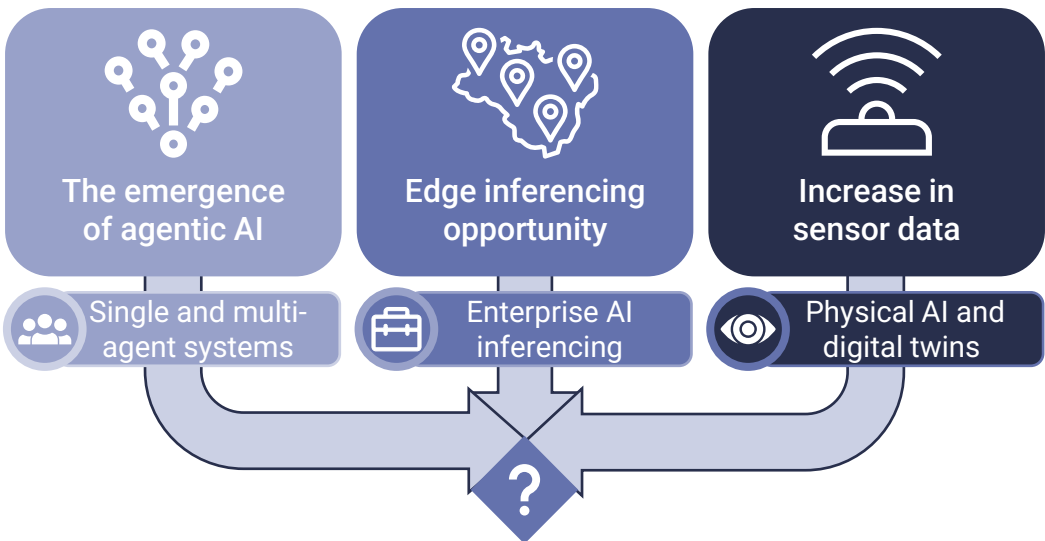


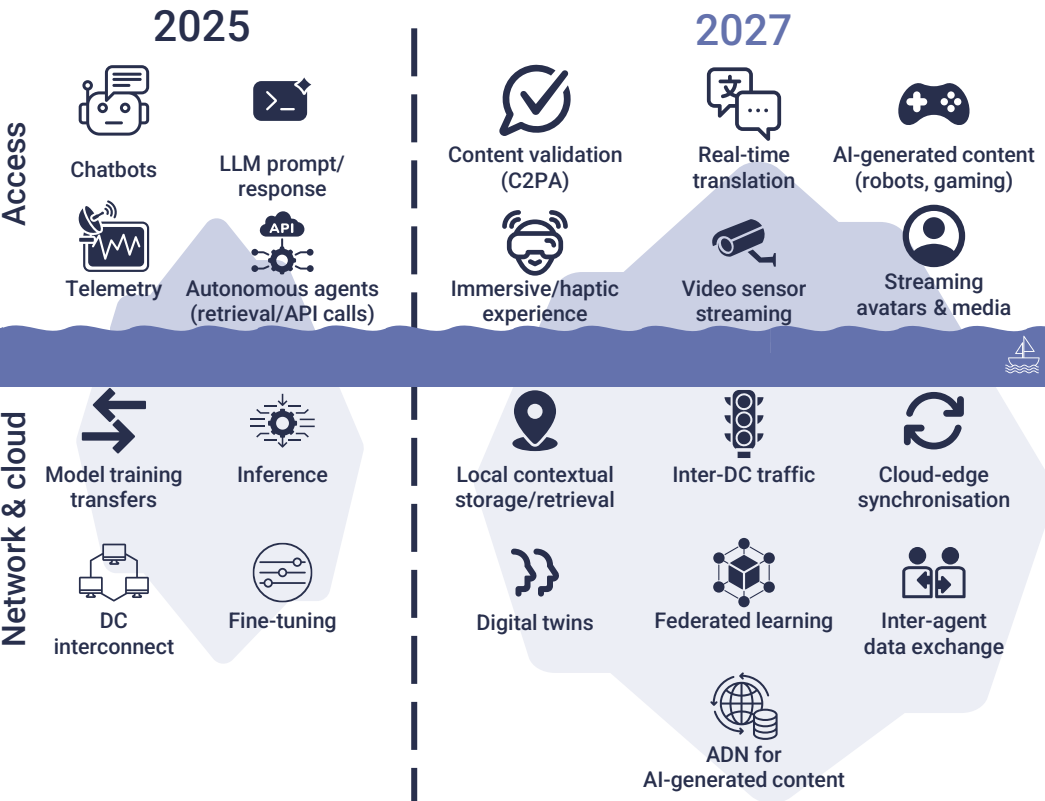
How telcos can become more relevant enablers of AI

This infographic outlines how AI is reshaping infrastructure and enterprise demands, and where telecom operators can play a central role in enabling AI deployment.

Telcos must embed AI today while anticipating evolving customer needs and these trends:

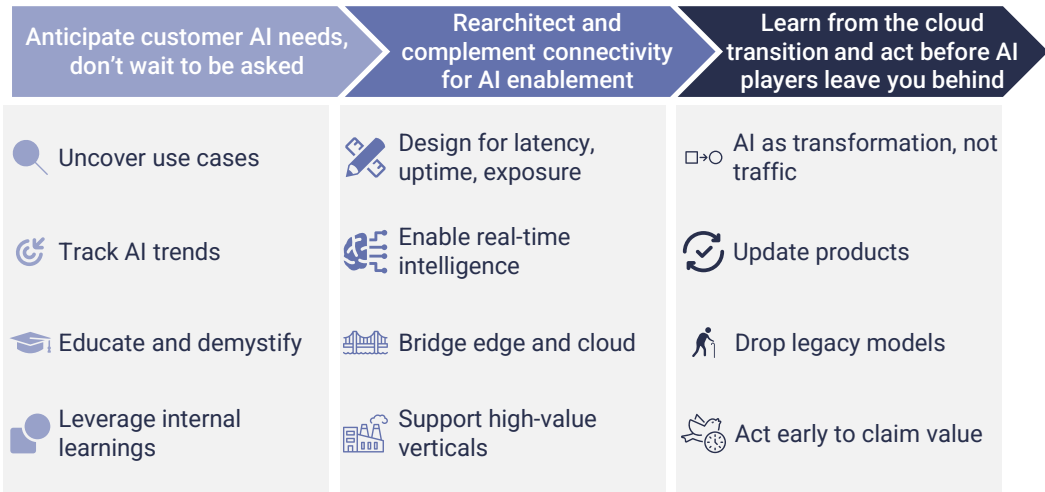


AI hasn't reshaped connectivity yet, but telcos must act to seize growing network, cloud and edge opportunities – now and ahead.

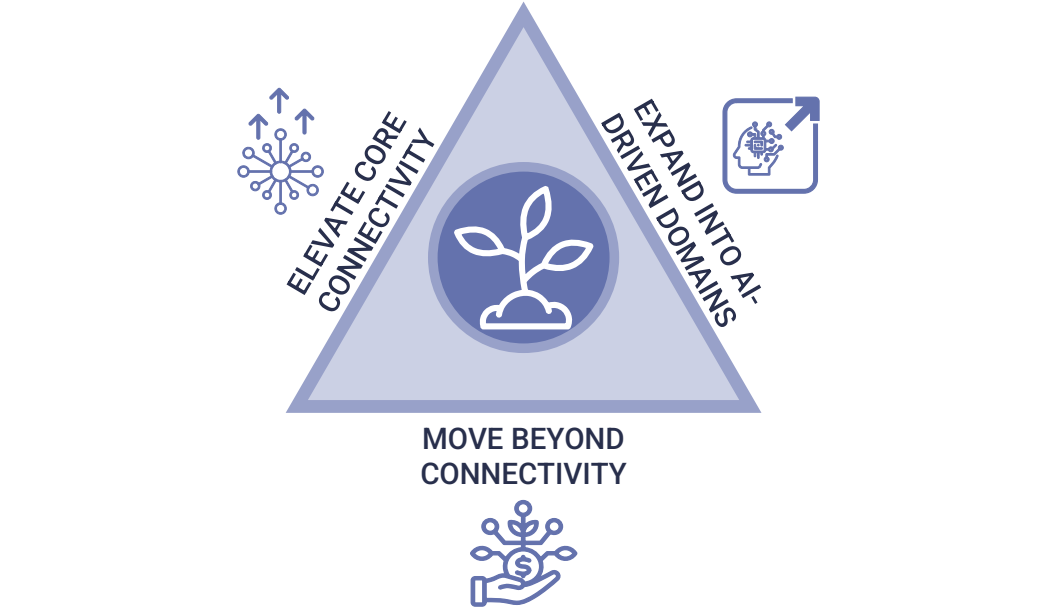


- Most operators currently see only a small portion of AI traffic, as most data exchanges do not cross their networks.
- We expect this to continue, with most AI workloads running in the cloud or increasingly on user devices and on premises.
- But new AI trends will drive fresh data flows between AI infrastructure, creating opportunities for operators.

Telcos could become insightful enablers by proactively addressing long-term customer AI needs.



This positions operators to engage meaningfully in enterprise AI conversations and unlock three major growth opportunities:



Find out more details in our sponsored article

[Click link here](#)